

Project Scope

1200 I/O

1 utility system

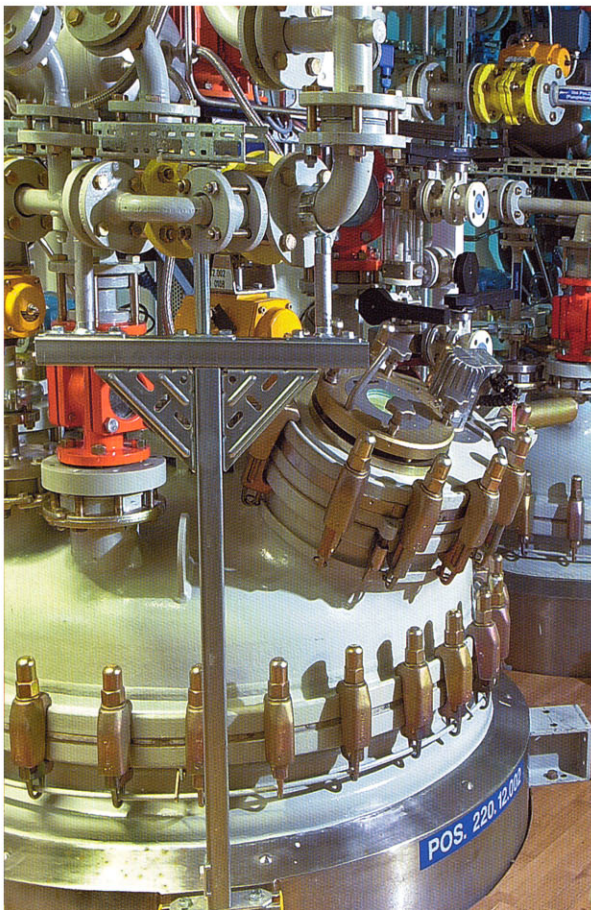
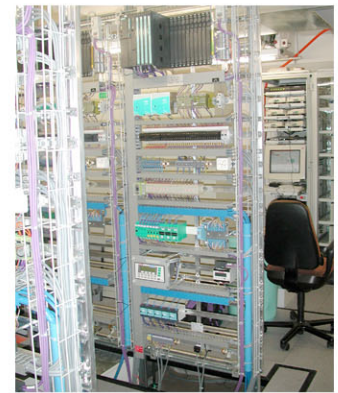
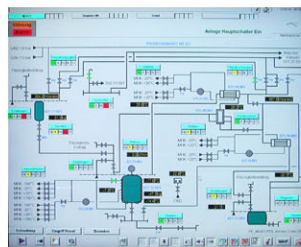
Consisting of a reactor crystallizer, a high temperature reactor, a low temperature reactor, a centrifuge, a dryer, two dry boxes.

**process control
technique**

Siemens S7, visualisation WinCC.

Operation through monitors in the control room and control switch boxes in the system.

Network connection through Profibus.



C8 KLL

Finished Projects

- project management EMSR
- concept development
- scheduling and control
- entire planning of EMSR
- project engineering of line/ automation rooms
- submission of installation and devices
- specification of hardware
- cabinet planning, layouts
- specification of field devices
- specification of systems
- EMSR-systems
- programming of systems
- coordination of start-up
- coordination of construction site PE/EMSR
- supervision of wiring
- documentaion/training